

Māori Health Review™

Making Education Easy

From Issue 47:6 - 2013

Prevalence of diabetic retinopathy and maculopathy in Northland, New Zealand: 2011–2012

Authors: Papali'i-Curtin AT et al.

Summary: This article reports rates of diabetic retinopathy and maculopathy detected by the Northland Diabetic Retinopathy Screening Programme. Data were analysed from 7098 screenings from 5647 diabetics, representing approximately 77% of the total number of diagnosed diabetics in Northland. The two main ethnic study groups were NZ European (56.5%) and Māori (39.3%). Retinopathy was present in 19% of the overall population: minimal non-proliferative diabetic retinopathy (NPDR) was diagnosed in 13.6%, NPDR in 5.4% and proliferative diabetic retinopathy (PDR) in 0.4%. Of the NPDR cohort, 57% were Māori and 38% were European, while in the PDR cohort, 50% were Māori and 45% were European. Maculopathy was present in 11%. Maculopathy requiring treatment was present in 1.4% (Māori 48%, European 44%). The mean failure-to-attend rate was 31%.

Comment: As they point out in the paper, there are many successful screening programmes in rural and Māori communities (i.e., breast screening in Northland is said to reach more than 90% of eligible women); perhaps retinal screening could learn from, if not tag onto, these.

Reference: *N Z Med J* 2013;126(1383):20-8

[Abstract](#)

Independent commentary by Dr Matire Harwood

Dr Matire Harwood (Ngapuhi) has worked in Hauora Māori, primary health and rehabilitation settings as clinician and researcher since graduating from Auckland Medical School in 1994. She also holds positions on a number of boards, committees and advisory groups including the Health Research Council. Matire lives in Auckland with her whānau including partner Haunui and two young children Te Rangiura and Waimarie.

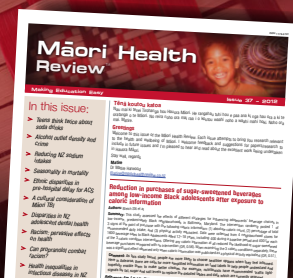
Research Review publications are intended for New Zealand health professionals.

Disclaimer: This publication is not intended as a replacement for regular medical education but to assist in the process. The reviews are a summarised interpretation of the published study and reflect the opinion of the writer rather than those of the research group or scientific journal. It is suggested readers review the full trial data before forming a final conclusion on its merits.

Subscribing to Māori Health Review

To subscribe or download previous editions of Research Review publications go to

www.researchreview.co.nz



New Zealand Health Survey recent reports

The New Zealand Health Survey (NZHS) provides a wealth of information about the health and wellbeing of New Zealanders. Recent releases include reports about emergency department use at public hospitals and a report about New Zealanders' experiences with health care services.

Emergency Department Use 2011/12 is available at: <http://www.health.govt.nz/publication/emergency-department-use-2011-12>

Patient Experience 2011/12 is available at: <http://www.health.govt.nz/publication/patient-experience-2011-12>



For more information, please go to <http://www.maorihealth.govt.nz>

www.maorihealthreview.co.nz

a RESEARCH REVIEW publication